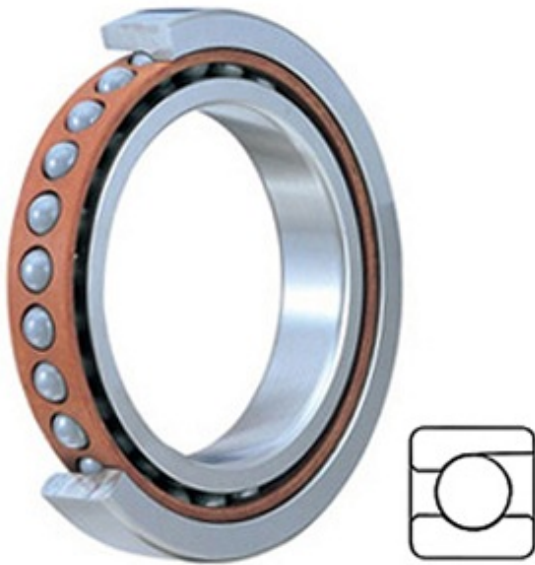




# TIMKEN BEARING MFG.CORP



2MM305WI Bearing 2D drawings and 3D CAD models

0.984 Inch | 25 Millimeter x 2.441 Inch | 62 Millimeter x 0.669 Inch | 17 Millimeter TIMKEN 2MM305WI Precision Ball Bearings

Bearing No. 2MM305WI

Category	Precision Ball Bearings
Inventory	0.0
Manufacturer Name	TIMKEN
Minimum Buy Quantity	N/A
Weight	0.232
EAN	0087796071414
Product Group	B04270
Enclosure	Open
Precision Class	ABEC 7   ISO P4
Material - Ball	Steel
Number of Bearings	1 (Single)
Contact Angle	15 Degree
Preload	None
Raceway Style	1 Rib Outer Ring
Cage Material	Phenolic
Rolling Element	Ball Bearing
Flush Ground	No
Inch - Metric	Metric
Other Features	Single Row   Angular Contact   Super High Precision
Long Description	25MM Bore; 62MM Outside Diameter; 17MM Width; Open Enclosure; ABEC 7   ISO P4 Precision; Steel Ball Material; 1 (Single) Bearings; 15 Degree



## TIMKEN BEARING MFG.CORP

	Contact Angle; Phenolic Cage Material; 1 Rib Outer Ring Rac
Category	Precision Ball Bearings
UNSPSC	31171531
Harmonized Tariff Code	8482.10.50.28
Noun	Bearing
Keyword String	Angular Contact Ball
Manufacturer URL	<a href="http://www.timken.com">http://www.timken.com</a>
Manufacturer Item Number	2MM305WI
Weight / LBS	0.51
D	2.441 Inch   62 Millimeter
B	0.669 Inch   17 Millimeter
d	0.984 Inch   25 Millimeter
d - Bore	25 mm
D - Outer Diameter	62 mm
Bearing Width	17 mm
do - Ball Diameter	11.906250 mm
C0 - Static Radial Rating	15300 N
Ce - Dynamic Radial Rating <sup>1</sup>	30500 N
Limiting Speed (Grease)	26200 rpm
Limiting Speed (Oil)	52400 rpm
Ball Type	STEEL
Cage Type	CR - Phenolic Outer Land Riding Cage
Bearing Weight	0.221 Kg
Design Units	METRIC
R - Inner Ring To Clear Radius <sup>2</sup>	1.0 mm
r - Outer Ring To Clear Radius <sup>3</sup>	1.0 mm
da - Inner Ring Backing Diameter	31.900 mm



# TIMKEN BEARING MFG.CORP

Da - Outer Ring Backing Diameter	55.800 mm
-------------------------------------	-----------